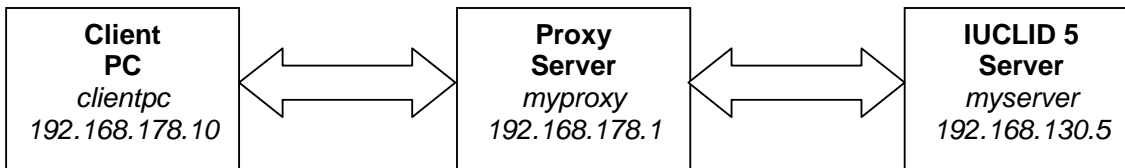


Table of Contents

1	OVERVIEW	1
2	IUCLID SERVER CONFIGURATION	2
3	IUCLID CLIENT CONFIGURATION	3
4	PERSPECTIVE.....	4
5	RESTRICTIONS	6

1 Overview

If the IUCLID client pc and the IUCLID server pc are not intended to connect directly to each other it is possible to configure an http proxy server in between to solve this problem.



The IUCLID client/server communication uses the http protocol. The following request types are used:

- GET
- PUT
- HEAD

The following chapters describe the client and server configuration necessary to enable the use of a proxy server together with IUCLID.

2 IUCLID server configuration

To use the IUCLID server together with a proxy the client download links in the index.jsp file have to be extended with additional configuration parameters.

The following configuration parameters are available for the proxy definition:

Parameter	Description
proxyuse	Enable or disable the use of proxies for the IUCLID client. ('true' to switch on the use of a proxy host)
proxyoverride	true to override the Java control panels network setup (proxy settings) with the defined proxyhost and proxyport definitions.
proxyhost	The IP address or name of the HTTP proxy host. This is only used if the proxyoverride is true.
proxyport	The proxy's port. This is only used if the proxyoverride is true.

Attention:

Do not use the "eu.eca.iuclid.common.communication.URLSerializedObjectConnection" as connector. Use the "eu.eca.iuclid.common.communication.URLCompressedByteConnection" which is the default connector if the parameter has not been defined.

For Java 1.6 clients it is necessary to define all proxy parameters on the server. In this case it is necessary to define for each proxy->server combination a separate client start link which contains the following parameters:

- **proxyuse=true**
- **proxyoverride=true**
- **proxyhost=<proxy ip or host name>**
- **proxyport=<proxy port>**

The following example defines a proxy usage in the index.jsp:

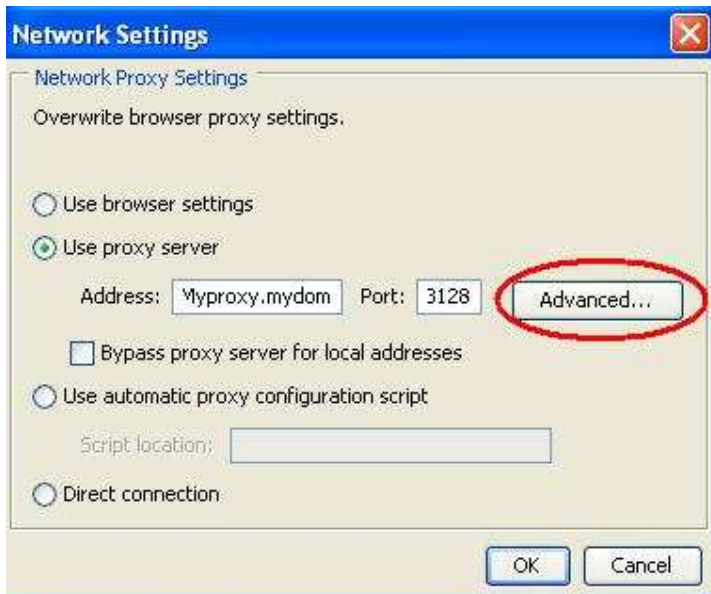
```
<h2 class="orange">Connect with compression (myproxy.mydomain.com:3128)</h2>
<p>
<a
href="/i5client.jnlp?prop=/i5client/jnlp.properties&initHeap=64&maxHeap=256&proxyuse=true&proxyoverride=true&proxyhost=myproxy.
mydomain.com&proxyport=3128">Install IUCLID 5 Client (normal)</a> |
<a
href="/i5client.jnlp?prop=/i5client/jnlp.properties&initHeap=256&maxHeap=512&mode=migration&proxyuse=true&proxyoverride=true&pr
oxyhost=myproxy.mydomain.com&proxyport=3128">(with 512MB RAM)</a> |
<a
href="/i5client.jnlp?prop=/i5client/jnlp.properties&initHeap=256&maxHeap=768&mode=migration&proxyuse=true&proxyoverride=true&pr
oxyhost=myproxy.mydomain.com&proxyport=3128">(with 768MB RAM)</a> |
<a
href="/i5client.jnlp?prop=/i5client/jnlp.properties&initHeap=512&maxHeap=1024&mode=migration&proxyuse=false&proxyuse=true&prox
yoverride=true&proxyhost=myproxy.mydomain.com&proxyport=3128">(with 1GB RAM)</a>
</p>
```

3 IUCLID client configuration

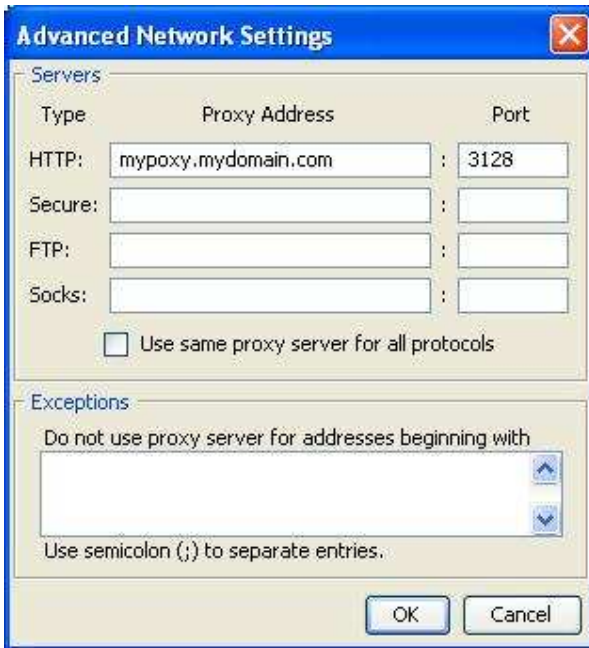
On the client side the Java WebStart application has to be configured to use a proxy. Therefore open the windows control panel and select the Java control panel.



Select the network configuration button to configure a proxy server. Define the proxy host (e.g. myproxy.mydomain.com) and the proxy port(e.g. 3128) to use.



Take care on the advanced network settings and ensure that only the HTTP proxy and port are filled in.



To call the IUCLID 5 server web page it is necessary to configure the proxy server settings in the web browser.

To start the IUCLID client via the proxy server open the IUCLID server website and select one of the "Install IUCLID 5 client ..." links:

Current server status: **ON**

Available connections

Connect without compression

Install IUCLID 5 Client (normal) | (with 512MB RAM) | (with 768MB RAM) | (with 1GB RAM)

Connect with compression

Install IUCLID 5 Client (normal) | (with 512MB RAM) | (with 768MB RAM) | (with 1GB RAM)

Connect with compression (myproxy.mydomain.com:3128)

Install IUCLID 5 Client (normal) | (with 512MB RAM) | (with 768MB RAM) | (with 1GB RAM)

4 Perspective

Because of changes for the network configuration system properties in Java 1.6 it is currently necessary to define all proxy->server combinations for the client install links on the server.

Java 1.5 and previous versions system properties:

- **http.proxyHost**
- **http.proxyPort**
- **http.nonProxyHosts**

Java 1.6 system properties:

- **deployment.proxy.type**
- **deployment.proxy.http.host**
- **deployment.proxy.http.port**

Currently the IUCLID server only checks the Java 1.5 system properties which are never set in a Java 1.6 WebStart client. To enable the use of a proxy server with a Java 1.6 WebStart client the client download link needs to be modified on the IUCLID server as described in chapter 2. Please set proxyuse=true and configure the proxy host name and the proxy port that should be used for the IUCLID communication.

5 Restrictions

IUCLID does not support the use of proxy servers that request user authentication. As a consequence the proxy must not perform any id/password based authentication to restrict the communication.